



Common Marmoset

Callithrix jacchus



Physical Characteristics:

I am very small, about the size of a rat and weigh less than three pounds. I have a small grey head with two furry white ears and a thin gray coat of hair. I have a long, light and dark banded tail and human like hands but instead of finger nails I have claws on all digits except my big toe. I make a high pitched shriek and chattering noise.

Habitat / Climate

Rainforests Tropical

Where am I from? I am found in South America in the Atlantic Coastal Forest of northeastern Brazil. I am arboreal and prefer secondary tropical rainforests and edge habitat. My range may include a variety of habitats but I must have enough trees that produce exudates (saps and gums) and sufficient hiding places from predators. My long limbs and tail aid me in running along branches and springing from one to another.



Other family members:

Black faced Lion Tamrin
Cotton-top Tamrin
Golden Lion Tamrin
Black headed Marmoset

Who are my relatives? I am a mammal of the *Primate* order and the *Callitrichidae* family. I belong to a class of monkeys called New World monkeys that live in central and South America. (Old World monkeys live exclusively in Africa and Asia.) The ape and prosimian are different from both Old and New World monkeys.



Golden Lion Tamarin

Breeding Potential

Number of offspring per pregnancy?

usually 2 but can be 3

Number of pregnancies per year? seasonal births every 6

How am I born? After a gestation period of 114 days my mother gives live birth to either twins or triplets. She will give birth again in this same year to another set of babies. We hang on to her back until we can climb on our own.

How long does it take me to grow up and how long do I live?

I will be weaned in two weeks and sexually mature at 18 months. My life span is about 12 years and when full grown I will weigh less than 3 lbs. My body length without my tail is 14 -19 centimeters.

Breeding Season

| | | | | | | | | | | |
|---|---|---|---|---|---|---|---|---|---|---|
| F | M | A | M | J | J | A | S | O | N | D |
| E | A | P | A | U | U | A | E | C | O | E |
| B | R | R | Y | N | L | U | L | P | T | C |

What kind of family life do I have?

We live in extended family groups of 8 - 10 individuals. There may be only one breeding female/male in the group. The male helps in carrying the young 7-10 days after birth. The whole group takes part in carrying the young and feeding the breeding females and infant carriers. We all share in mutual grooming.

Names for:

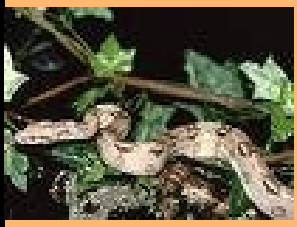
Adult male- male
Adult female-female
Young- infant
Group:- troop or tribe

What do I eat and when do I eat?

My teeth are designed for extracting gum from the trees. I am largely diurnal and find my food visually. In the wild I eat fruit, insects, spiders, lizards, frogs, snakes, grasshoppers, crickets, cockroaches. We drink water all the time. I am most active early in the morning.

Who are my predators?

Raptors and snakes are my main predators.



What is the history of my relationship with man?

